

Basic Warm-up

Using Cichowicz flows and Clark Studies

“

I am suggesting that we consider creating more opportunities to practice and learn together...*to sharpen each other as iron sharpens iron.*

”

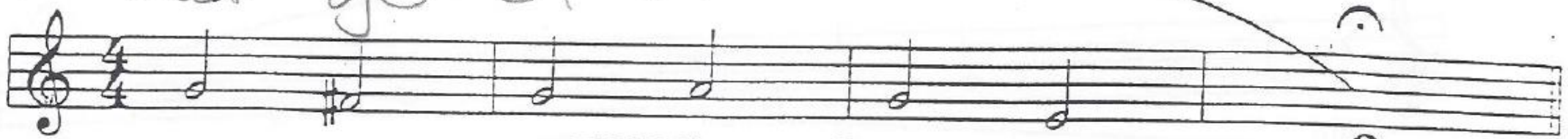
Wiff Rudd in “Collaborative Practice Concepts”, p. 8, quoting Proverbs 27:17

One way that collaboration helps us practice is in allowing ample time to rest, something we're inclined to skip over.

Vincent Cichowicz Flow Studies #1

Trumpet

Relax, inhale, blow freely
Let go of air



p



p



Vincent Cichowicz Flow Studies #2

Trumpet

Sound - connecting - sound

m.m.= 50

mp

The image shows a handwritten musical score with three staves. The top staff is a blank grand staff with a treble clef and a *mp* dynamic marking. A purple handwritten symbol, resembling a stylized '4' or a cross, is written on the left side of this staff. The middle staff is in treble clef with a key signature of two sharps (F# and C#) and a *mp* dynamic marking. A green arrow points to the first note of this staff. The bottom staff is in treble clef with a key signature of two flats (Bb and Eb) and a *mp* dynamic marking. All three staves contain a melodic line of quarter notes. The notes in the middle and bottom staves are connected by a long, curved slur. The notes in the middle and bottom staves are also connected by a long, curved slur. The notes in the middle and bottom staves are also connected by a long, curved slur.

The image shows a handwritten musical score with three systems of staves. Each system consists of a treble clef staff and a bass clef staff. The first system has a key signature of two flats (B-flat and E-flat) and a dynamic marking of *mp*. A green arrow points to the first note of the treble staff in this system. The second system has a key signature of one sharp (F-sharp) and a dynamic marking of *mp*. The third system has a key signature of three sharps (F-sharp, C-sharp, and G-sharp) and a dynamic marking of *mp*. Each system features a melodic line in the treble staff and a bass line in the bass staff, with various note values and rests. The notation is handwritten and appears to be a study or working draft.

Handwritten musical notation for a trumpet study. The notation is on a single staff in treble clef with a key signature of one sharp (F#). It begins with a dynamic marking of *mp*. The melody consists of a series of eighth and quarter notes, all under a single slur. The notes start on G4 and ascend to D5, then descend back to G4. The piece concludes with a double bar line and a fermata over the final note.

Vincent Cichowicz Flow Studies #9

Trumpet

m.m. = 80

Handwritten musical notation for a trumpet study. The notation is on a single staff in treble clef with a key signature of one sharp (F#). The melody consists of a series of eighth and quarter notes, all under a single slur. The notes start on G4 and ascend to D5, then descend back to G4. The piece concludes with a double bar line and a fermata over the final note.

To continue, use Clark Studies and Scales

- Clark Studies: 2nd, 4th, and 5th Studies: easy keys to start with, alternate with tonguing.
- 2nd Study: key of F, 2x's one breath (3 if that's too easy)
- 4th Study: key of F, 1 breath at midpoint only, no repeat on this one
- 5th Study: key of G, 1 breath at midpoint only after repeat of first section